



Family Promise of Grand Rapids

ending homelessness...one family at a time

2015 Annual Report



Staff

Karen Belfer
Operations Manager

Ana Bohr
AmeriCorps MCAH Member

Lisa Cruden, LMSW
Director of Family Services

Donna Evans
Day Center Staff

Krystal Jackson
Pathway Home Family Service Coordinator

Gjenikwa James
Day Center Staff

Joni Jessup
Volunteer Coordinator

Mary O'Brien
Director of Operations

Molly Longman, LLMSW
Pathway Home Program Manager

Kate O'Keefe
Community Relations and Development Manager

Mary Peralta, LLMSW
Pathway Home Family Service Coordinator

Cheryl Schuch
Executive Director

Tom Split
Day Center Staff

Amanda Sterzick, LLMSW
IHN Family Service Coordinator

Lisa Valk
Director of Housing and Business Development

Kelsy Vining
Partners In Housing Family Service Coordinator

Barbara Zylstra
Partners In Housing Program Manager

Family Promise of Grand Rapids Operating Board 2015

Wayne Randall - Board President
Bank of America

Nikole Canute - Board Vice President
Mika Meyers Beckett & Jones PLC

Lisa Valk - Board Treasurer
HR Collaborative

Christina McDonald - Board Secretary
Dickinson Wright, PLLC

Cheryl Schuch - Executive Director
Family Promise Executive Director

Amanda Brand
A Brand New Way

Michael Bennett
The Bank of Holland

April Bisonet
IBS Financial Group

Chris Boike
Corporate Funding, Inc.

Jeff Clark
Timothy Group

Amy Collea
Cascade Pediatrics

Mark DeKorne
First Trust Portfolios

Father Mike Fedewa
St. Andrews Episcopal Church

Randy Locke
Amway

Amy Meeuwenberg
Amway

Karen Ricketts
Foremost Insurance Group

Steve Smith
Grand Valley State Unveristy

Thomas Zeman
Bank of America



Advisory Cabinet

Michael Sytsma - Chair
Bank of Holland

Ellie Frey
Family Business Alliance

Steve Heacock
Spectrum Health

Shelley Irwin
WGVU Morning Show

A NOTE FROM OUR DIRECTOR...



Dear Friends,

Thank you for making this past year one of the most remarkable ever for Family Promise of Grand Rapids! In 2015, we launched a three year Capital and Capacity Expansion Campaign called *A Journey Home*. You gave, you served, you provided transportation, you attended committee meetings (many), you prepared meals and comforted moms, dads and children. Because you care, you worked overtime for families and for that reason you helped us accomplish a milestone year:

- Our shelter and rapid rehousing capacity has been extended from 50 families per year to over 200 families.
- Families now have the opportunity to receive supportive Aftercare services once they move into their new homes, further growing their success, confidence and independence, so they never become homeless again!!
- Our Partners in Housing Program is on track to provide 20 families with a homeownership opportunity. It is an affordable housing option that is desperately needed by families. That's double the number of homes we've produced last year.
- We now have a beautiful new Day Center (516 Cherry St.) for families in shelter and those who receive housing services. Stop by for a visit!

These accomplishments support our ongoing goal to end homelessness... one family at a time by providing safe shelter, and supporting families in finding a new home for their family. All of our services and programs are directed toward this end goal. We never want another child to ask, "Mommy, do we have a place to sleep tonight?"

Many families have told us that Family Promise was their last hope. Imagine the panic in a parent's heart that comes with homelessness. Today, thousands of children continue to live in poverty and homelessness. In Michigan alone, there are over 20,000 children who are homeless (state of Homelessness in Michigan, 2014). We know from the work we do that children who are homeless often struggle with the effects of Toxic Stress which can significantly reduce learning capacity, cause behavioral health disorders like ADHD and can cause long-term health issues like diabetes and heart disease. The effects of homelessness on children and families affect everyone in the community.

We may represent a ripple of hope but for the 3,000 children we have served, it is an ocean of opportunity. Homes provide stability. Children remain in school with regular attendance. Families begin to recover and work together for bright futures. Parents and children begin to dream about...college, steady jobs, grilling in the backyard, riding bikes and meeting neighbors. They become families living life; just like your family and mine.

As we begin our 20th year in January, I sincerely thank you on behalf of the families and children we serve. I invite you to attend one of our events (golf in the fall and our gala in the winter), make donations and volunteer your time. You will love every moment of your time with the families.

Finally, a special "shout out" to our remarkable Board of Directors, Capital Campaign Chairs & Cabinet, committee members, staff, and the volunteers and congregations who work tirelessly every week to make everything happen in a loving way for our families. Thank you for helping to end homelessness... one family at a time.

Sincerely,

A handwritten signature in black ink that reads "Cheryl Schuch". The signature is fluid and cursive, written over a light-colored background.

Cheryl Schuch
Executive Director

THE PROBLEM...

The majority of the families we serve simply cannot afford rent payments in the Grand Rapids area, even though one or both parents are employed!

A national study recently identified Grand Rapids as one of the top markets in the nation for ownership of rental properties. With less than 1% rental vacancy we are seeing a high demand for rental units leading to extremely high rent.

On top of costly rent payments and a stagnant wages, children also become homeless as a result of a life crisis: a mother who loses her job, a father is kept from working by an injury, or family breakup. These are some of the reasons why families now make up more than 40 percent of the homeless population and why one in every four homeless people is a child.

THE NEED...

In 2015, we began to see the number of families with children seeking shelter sharply increase by over 200%. We were soon faced with the fact that there wasn't enough safe family shelter space to get these children off the street and families were being turned away when seeking shelter. We also began to notice that rents were rising fast and apartments were harder to come by. The average length of stay in shelter increased by 15% which created less shelter capacity on top of the increased need for shelter. More affordable housing was needed if we were going to end homelessness for families. Lastly, families were struggling to stay housed once they exited shelter. We were seeing more families return to homelessness for a second time and found that they needed additional supports and connections once they exited shelter to help them stabilize so they could keep their housing situation stable.



INCREASE IN RENT



Since 2010 the cost for a a 2 bedroom apartment has more than doubled with the average rent being around \$900.

BECAUSE OF YOU WE MET THE COMMUNITY NEED!



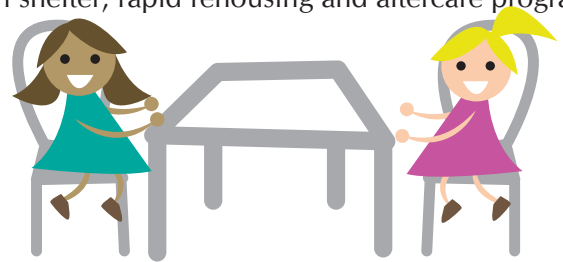
OUTCOMES AND SOLUTIONS...

1.

Expanded Service Space!

Created a new Day Center - a space that provides dignity and hope to all who enter!

- ADA barrier free for all guest families, volunteers and staff
- Respite room for children to take naps, for sick guests, and for quiet sleep space for third shift workers
- Expanded service space to support additional families in shelter, rapid rehousing and aftercare programs
- Private meeting space for families
- Play space for children
- Safe parking for guests and volunteers



2.

More Housing!

Increased home ownership opportunities for homeless families!

The number of Partners in Housing homes completed and given to families will double. That means an additional 60 homes over the next 3 years! We are currently on track to do 25 homes in 2016.

3.

Much needed shelter for families!

Through Pathway Home (our innovative partnership with Mel Trotter Ministries) we are now able to provide shelter to an additional 22 families each night! That is an increase of almost 200 families per year that have a safe place to stay while they secure permanent housing and no longer have to worry about being on the street or in an unsafe situation.



4.

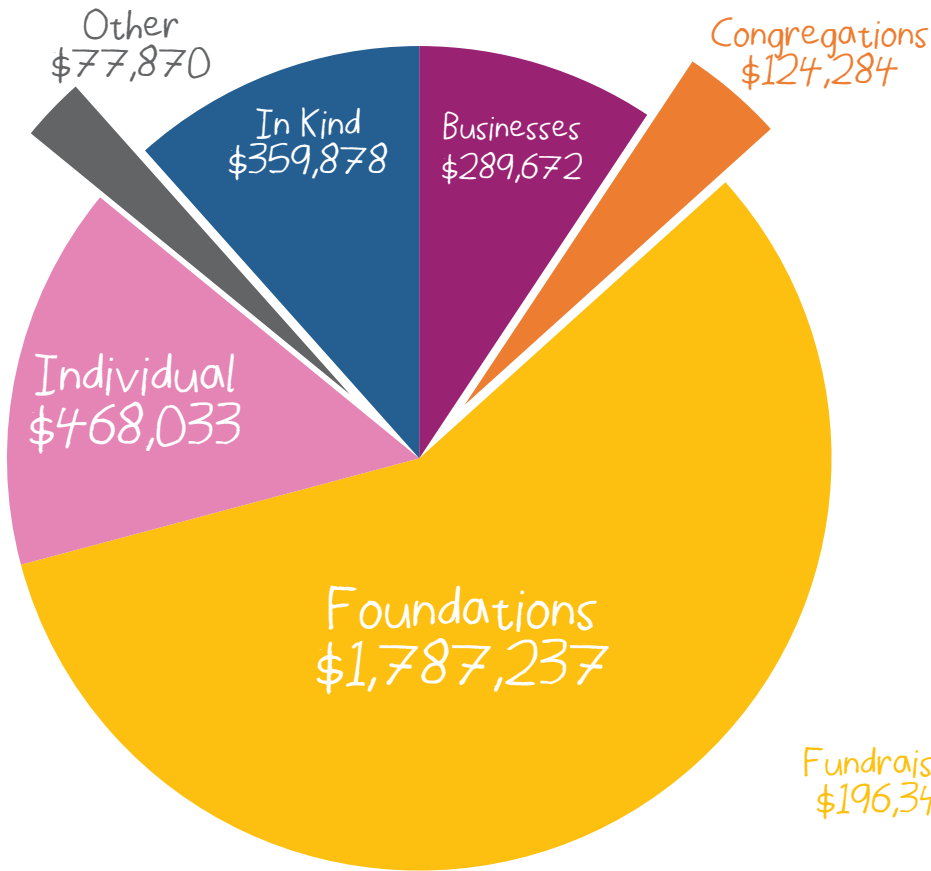
Housing stability for our children!

We can now support ALL families who request Aftercare services after they move into their new home to help them ensure they can keep their new home for years to come! More than 150 families per year will be able to benefit from this program.

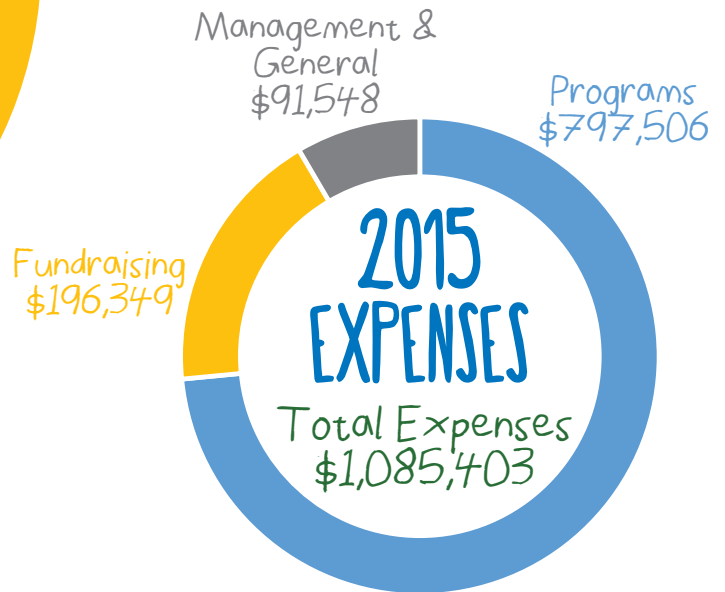


THE NUMBERS...

2015 INCOME

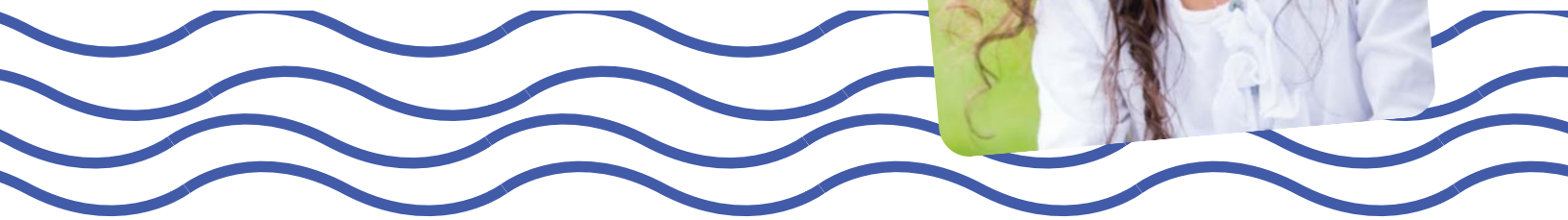


Total Income
\$3,106,974



Total Number of Individuals Served in 2015

1100 individuals served
748 were kids



COMMUNITY IMPACT, IT TAKES A VILLAGE

THANK YOU to our AMAZING volunteers!! You have gone above and beyond in 2015. Your gifts of time, talent and resources have allowed children and their families to get off the street (quickly) and find a home! You continue to step-up every year by providing a warm safe place for families, delicious meals, endless encouragement, hospitality, and hope to hundreds of homeless families. You are truly helping to change the future for so many West Michigan children.

Cost of Volunteers in the State
of Michigan
\$22.55/hour

Total Volunteer Hours
24,685

Total Value of Volunteers
\$556,646



IHN CONGREGATIONAL NETWORK

HOST CONGREGATIONS

Calvin Christian Reformed
Cornerstone Church
East Congregational United Church of Christ
Fifth Reformed Church
First United Methodist Church
Genesis United Methodist Church
Grace Episcopal Church
Ivanrest Christian Reformed Church
Mayflower Congregational Church
Neland Avenue Christian Reformed Church
Plymouth United Church of Christ
Plymouth Heights Christian Reformed Church
Princeton Christian Reformed Church
St. Andrew's Episcopal Church
Trinity Lutheran Church
Wesley Park United Methodist Church

SUPPORT CONGREGATIONS

12th Avenue Christian Reformed Church
All Souls Community Church
Bread of Life Lutheran Church
Brookside Christian Reformed Church
Congregation Ahavas Israel
Eastminster Presbyterian Church
First Reformed Church (Grandville)
Fountain Street Church
Hager Park Church
Hilliard Chapel AME Zion
Holy Trinity Episcopal Church
Kentwood Community Church
Living Word Christian Center
Our Lady of Consolation
Renaissance C.O.G.I.C
St. Paul's United Methodist Church
St. Stephen Parish
Second Congregational United Church of Christ
Tabernacle Community Church
Thornapple Covenant Church

MISSION STATEMENT

To end homelessness, one family at a time, by engaging faith-based and community organizations to provide emergency shelter and basic needs to families with children who are homeless and to provide additional programs to assist them in finding housing and sustaining their independence.

Family Promise of Grand Rapids is a 501(c)(3) organization. All gifts are tax deductible. We depend on your donations. Gifts can be made online at www.familypromisegr.org or mailed to:



CONTACT INFORMATION

www.familypromisegr.org
516 Cherry Street SE, Grand Rapids, MI 49503
(616) 475-5220
familypromise@familypromisegr.org